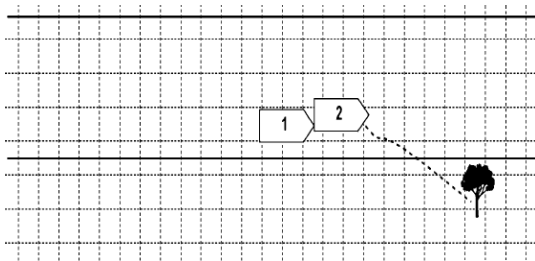


## Is this event from my crash?

### Project 1 - Student

The driver of a Volvo XC60 is involved in a hit and run collision. The driver of the Volvo states he was driving down a residential street when he was struck from behind by a pick-up truck. The collision caused him to lose control and strike a decorative tree on the sidewalk on the right side of the road. The truck reportedly passed the Volvo on the left and departed the scene at a high rate of speed. The Volvo driver indicated he was travelling less than 20 mph when struck. He called a tow truck and had the Volvo towed from the scene then days later went to report the collision at a local police station. The owner/driver signed a consent form for the EDR to be imaged at the tow yard where the vehicle was stored. Photographs of the vehicle are below. The following pages are the EDR report from the collision. Answer the following questions **with justification for each answer**.

Police diagram based on the driver's reports of the collision and photos of the vehicle at inspection. Arrows point to the exposed curtain airbags.



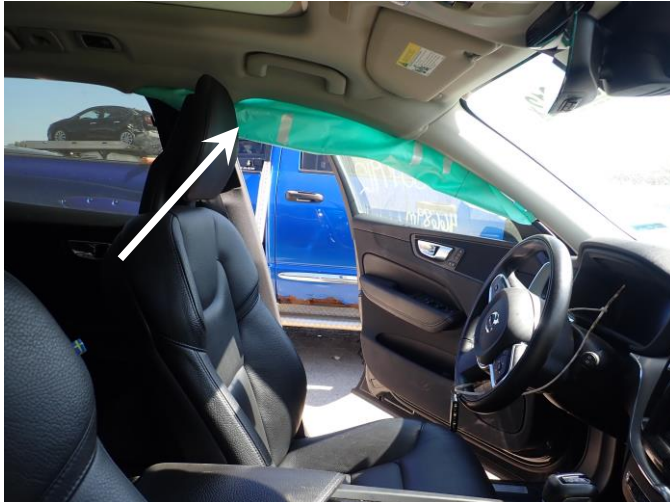
Police Diagram



Front end damage



Rear end damage



Driver's side interior



Passenger side interior

1. Based on the EDR report and the information below, which, if any, of the EDR events are from the reported crash?
2. Did the airbags deploy?
3. What charges would you file in this case?